

GV-Control Center

Handy Tool
For Security
Control Center
Operations

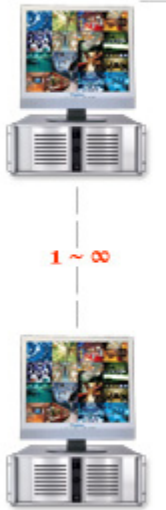


INTRODUCTION

The GV-Control Center software is an integrated security management system that provides a handy tool to maintain central monitoring station operation. GV-Control Center introduces a comprehensive solution that provides center operators with time efficiency to control networked GV-Systems and I/O devices. With GV-Control Center, multiple GV-Systems and I/O devices within a DVR server farm can be managed and maintained efficiently to enhance their monitoring performance and ensure smooth operation.



GV-SYSTEMS



INTERNET

SITE SURVEILLANCE CONTROL CENTER APPLICATIONS



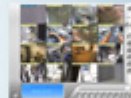
Remote DVR
Full control of local DVR settings



Remote Desktop
Remote access to local DVR desktop



Digital Matrix
Video display, recording and playback from different groups of cameras



Remote ViewLog
Playback of recorded videos from local GV-Systems



I/O Central Panel
Group, manage and trigger related I/O devices



Video Walls
Controls up to 200 Video Wall

I T M A I N T E N A N C E

MAIN FEATURES

The Control Center's features and capabilities include the followings.

▶ **Remote DVR Configuration: Full control of local DVR settings**

The Remote DVR facilitates the administrator to remotely configure local GV-System's specific settings from one single workstation. When the Remote DVR is on the run, the local GV-System loses its full control of the DVR operations and the Control Center takes full control of the configuration.

▶ **Remote Desktop: Remote access to local DVR desktop**

When the Remote Desktop is on the run, the Control Center will receive the same desktop view of local DVR. In the meantime, the security administrator can remotely control the local GV-System's full operations and even configure Windows operation system of the networked GV-System at low bandwidth.

▶ **Matrix View: Remotely monitor, record and playback from 1000 hosts**

The Matrix View is a single display where videos from a group of maximum 96 cameras will be displayed, e.g. groups of office area cameras, exit cameras, or street cameras. The GV-Control Center supports up to 8 Matrix View displays with 768 cameras on 8 monitors at a time. Depending on various surveillance needs, the center operator can open 8 Matrix View displays simultaneously to view more videos from different DVRs / NVRs. Each Matrix View supports live monitoring, recording and video playback.

▶ **Remote ViewLog: Playback of recorded videos from local GV-Systems**

The Remote ViewLog function enables playback of all video archives from different GV-Systems. The security administrator can utilize this Remote ViewLog to save video clips for future event retrieval or for video evidence.

▶ **I/O Central Panel: Group, manage and remotely configure I/O devices**

The Control Center provides a useful I/O Central Panel for the security administrator to remotely manage all I/O devices connected with GV-Systems. Administrators can group function-related I/O devices together for ease of control, e.g. groups of IR sensors, alarms, or fire exits. In case of building fire, for example, the Control Center can trigger all alarms on the networked GV-Systems and force opening all the fire exits or water spray systems at the same time.

▶ **Video Wall (optional)**

A video wall is an establishment of multiple monitors on a server. In this setup, the number of monitors allowed depends on the capability of the server's graphic card. With the Video Wall function of Control Center, you can create layout, Zoom Window and Scan Window. The Control Center can manage up to 200 video walls.

SPECIFICATIONS

Features	Control Center
DVR Hosts	Unlimited *
Video Server Hosts	Unlimited *
IP Camera Hosts	
Compact DVR Hosts	
Remote DVRs	Unlimited *
Remote DVR Desktops	Unlimited *
Remote ViewLogs	8
Video Wall (optional)	1 to 200 licenses
I/O Hosts (only for GV IP products)	Unlimited * * One host supports up to 9 sets of 16-in and 16-out I/O modules.
Remote E-Map Hosts / Maps	500 / Unlimited
Live View	Single View Window: 1 Window Multiple View Window: 36 Divisions
Matrix Views / Groups / Channels	8 Matrix Views / Unlimited / 768 Channels in total (For 1920x1200, 1920x1080 resolution)
VMD Groups / Channels (Only for GV IP products)	1 Group / 1200 CH Group Channel (Only for GV IP products): <ul style="list-style-type: none"> DVR: 1000 Channels GV-Video Server + GV-Compact DVR + GV-IP Camera: 200 Channels
Panorama Views / Channels	4 Panorama Views / 32 Channels per view 1024x768 / 64 Channels (Total: 512 Channels on 8 Matrix) 1280x1024 / 64 Channels (Total: 512 Channels on 8 Matrix) 1680x1050 / 80 Channels (Total: 640 Channels on 8 Matrix)
Matrix Resolutions / Channels	1600x1200 / 64 Channels (Total: 512 Channels on 8 Matrix) 1920x1200 / 96 Channels (Total: 768 Channels on 8 Matrix) 1920x1080 / 96 Channels (Total: 768 Channels on 8 Matrix) 1280x800 / 48 Channels (Total: 384 Channels on 8 Matrix) 1440x900 / 48 Channels (Total: 384 Channels on 8 Matrix)
Language	Arabic, Bulgarian, Czech, Danish, Dutch, English, Finnish, French, German, Greek, Hebrew, Hungarian, Indonesian, Italian, Japanese, Lithuanian, Norwegian, Persian, Polish, Portuguese, Romanian, Russian, Serbian, Simplified Chinese, Slovakian, Slovenian, Spanish, Swedish, Thai, Traditional Chinese, Turkish

Note: The maximum number of hosts allowed depends on the performance of Control Center server.

Minimum System Requirements

Standard Requirements (for GV-Control Center & Video Wall Server)

OS	32-bit	Windows 7 / 8 / Server 2008
	64-bit	Windows 7 / 8 / Server 2008 R2 / Server 2012
CPU	Core 2 Duo E6400, 2.13 GHz	
RAM	2 x 2 GB	
Hard Disk	1 GB	
Graphic Card	AGP or PCI-Express, 1024 x 768, 32-bit color	
Direct X	9.0c	
LAN Card	Gigabit Ethernet x 1	
Hardware	Internal or External GV-USB Dongle	

Note: If you are using more than two graphic cards on a server, make sure they are of the same brand, model and driver version to ensure maximum efficiency.

Advanced Requirements (for GV-Control Center & Video Wall Server)

OS	64-bit	Windows 7 / 8 / Server 2008 R2 / Server 2012
CPU	Core i7 2600K, 3.4 GHz	
RAM	3 x 2 GB	
Hard Disk	1 GB	
Graphic Card	AGP or PCI-Express, 1024 x 768, 32-bit color	
Direct X	9.0c	
LAN Card	Gigabit Ethernet x 2	
Hardware	Internal or External GV-USB Dongle	

Note:

1. We do not recommend installing GV-Center V2 (Pro) and GV-Control Center modules on the same PC. **Running GV-Center V2 (Pro) and GV-Control Center on the same PC may result in CPU overload error or system failure.**
2. If you are using more than two graphic cards on a server, make sure they are of the same brand, model and driver version to ensure maximum efficiency.

Software License

Free License	N/A
Maximum License	Unlimited number of hosts
Increment for Each License	N/A
Optional Combinations	<ol style="list-style-type: none"> 1. Control Center 2. Control Center + Video Wall (1 to 200 license) 3. Control Center + VSM 4. Control Center + VSM + Video Wall (1 to 200 license)
Dongle Type	Internal or external

Note:

1. For the Video Wall function, make sure you insert a GV-USB dongle with Video Wall function to Control Center server.
2. It is recommended to use the internal GV-USB Dongle to have the Hardware Watchdog function which restarts the PC when Windows crashes or freezes.

Installation Suggestions

1. The Advanced Version is highly recommended for any of the following conditions:

Host Type	Resolution	Video Compression	No. of Channels
DVR	D1	H.264	49 or more
	CIF	H.264	71 or more
IP Camera	CIF	H.264	17 or more
	VGA	H.264	8 or more
	1 M	H.264	3 or more
	2 M	H.264	2 or more
	3 M	H.264	2 or more
	4 M	H.264	2 or more
	5 M	H.264	3 or more

Note: The above data may vary in different scenes (different data bitrates).

2. If the videos are recorded in MJPEG under LAN, double Gigabit Ethernet is highly recommended.

Supported DVR Version

The Control Center is compatible with GV-System / GV-NVR V8.5 or later.